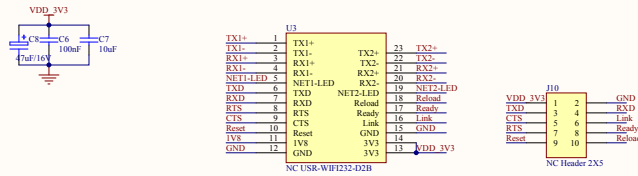
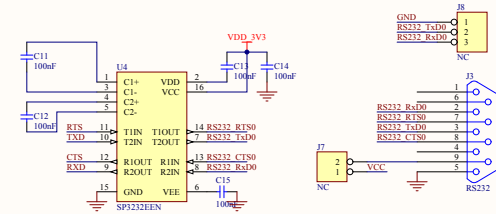


WIFI



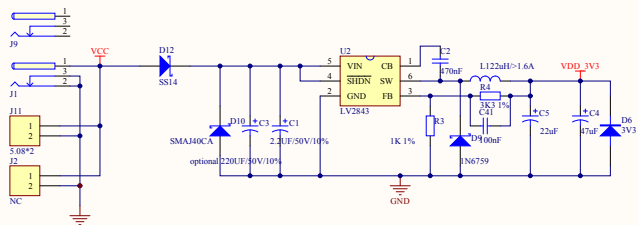
RS232



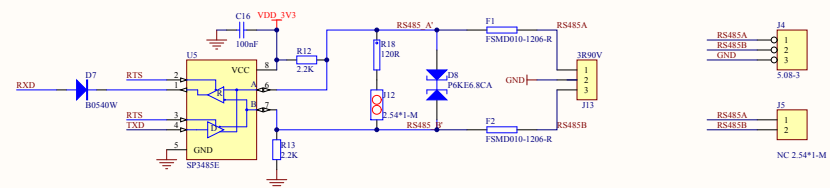
注意!!!

- 1, 模块供电电压必须严格小于其最大允许电压
- 2, 外部接口和模块接口直接连接时必须保证电平一致, 不一致需要做电平匹配

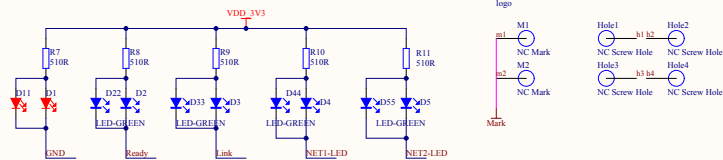
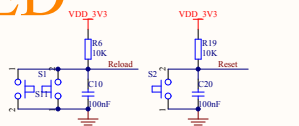
POWER



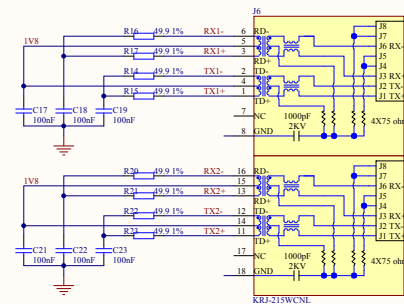
RS485



KEY&LED



RJ45



Title		
Size	Number	Revision
C		
Date:	2015-4-8	Sheet of
File:	E:\USR-WIFI	\USR-WIFI232-02B\usr_wifi.doc