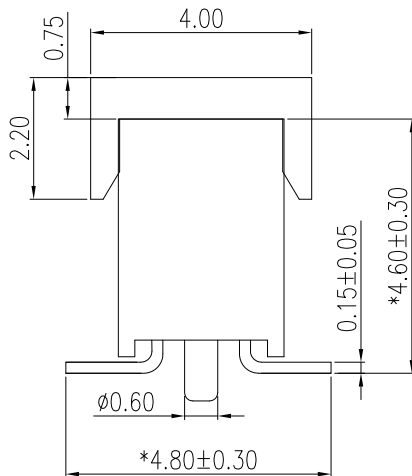
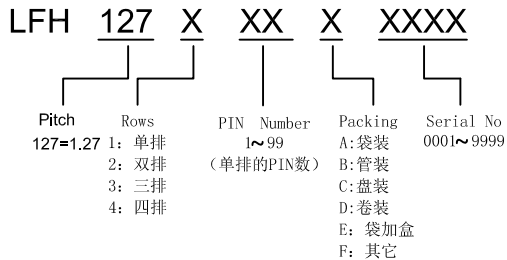


PCB LAYOUT



TOLERANCE UNLESS OTHERWISE SPECIFIED			
LINER		ANGLES	
.0	±0.30	0. °	±3°
.00	±0.20	.0°	±2°
.000	±0.10	.00°	±1°

REV	ECN NO	DESCRIPTION	DATE		NAME	
A		NEW	12/02-'22		KJL	
Specifications 规范 1.Current Rating: 1.0Amps 额定电流:1.0安培 2.rated voltage: 125V AC/DC 额定电压:125V AC/DC 3.Insulation Resistance: 1000 MΩ Min 绝缘电阻:最小1000 MΩ 4.Dielectric withstanding Voltage: 500V AC 耐电压:500V AC 5.Contact Resistance: 20 mΩ Max 接触电阻:最大20 mΩ 6.Operating Temperature: -40°C to+105°C 工作温度:-40°C ~ +105°C 7.Contact Material: Phosphor Bronze 接触材质:磷铜 8.Plating: Au G/F Nickel base 30u"MIN 电镀:金 G/F 镍底30u"最小 9.Insulation Material: PA6T,UL94V-0 绝缘材料:PA6T,UL94V-0 10.Marked “*” symbol are major dimensions 标有“*”符号为主要尺寸 11.Packing: REEL; 包装: 卷装;			PIN	DIM A	DIM B	A
			2x1P	1.67		
			2x2P	2.94	1.27	
			2x3P	4.21	2.54	
			2x4P	5.48	3.81	
			2x5P	6.75	5.08	
			2x6P	8.02	6.35	
			2x7P	9.29	7.62	
			2x8P	10.56	8.89	
			2x9P	11.83	10.16	
			2x10P	13.10	11.43	B
			2x11P	14.37	12.70	
			2x12P	15.64	13.97	
			2x13P	16.91	15.24	
			2x14P	18.18	16.51	
			2x15P	19.45	17.78	
			2x16P	20.72	19.05	
			2x17P	21.99	20.32	
			2x18P	23.26	21.59	C
			2x19P	24.53	22.86	
			2x20P	25.80	24.13	
			2x21P	27.07	25.4	
			2x22P	28.34	26.67	
			2x23P	29.61	27.94	
			2x24P	30.88	29.21	
			2x25P	32.15	30.48	
			2x26P	33.42	31.75	D
			2x27P	34.69	33.02	
			2x28P	35.96	34.29	
			2x29P	37.23	35.56	
			2x30P	38.50	36.83	
			2x31P	39.77	38.10	
			2x32P	41.04	39.37	
			2x33P	42.31	40.64	
			2x34P	43.58	41.91	
			2x35P	44.85	43.18	E
			2x36P	46.12	44.45	
			2x37P	47.39	45.72	
			2x38P	48.66	46.99	
			2x39P	49.93	48.26	
			2x40P	51.20	49.53	



LDCONN 东莞连大精密制品有限公司 DongGuan LianDa Precision Products Co., LTD									
TITLE		PH1.27X4.3 2X32P SMT 排母U型,带吸取帽定位柱			DRAWN BY		KJL		12/02-'22
PART NO		LFH127232DXXXX			CHECKED BY				
DRAWING NO					APPROVED BY				
SCALE	1:1	UNITE	mm		PAGE	1/1	SIZE	A4	